



SPARE PARTS CATALOGUE

Power wheel chair

Storm 3

Chapter

1. Chassis

2. Driving Unit

3. Wheel Suspension / Wheels

4. Brake

5. Electric Support

6. Lightning

7. Electronic

8. Learests

9. Seat Unit

10. Back Unit

11. Side Panel

12. Lifter

13. Control Unit / Jovstickbox

14. Control Unit Support

15. Desk

16. Options

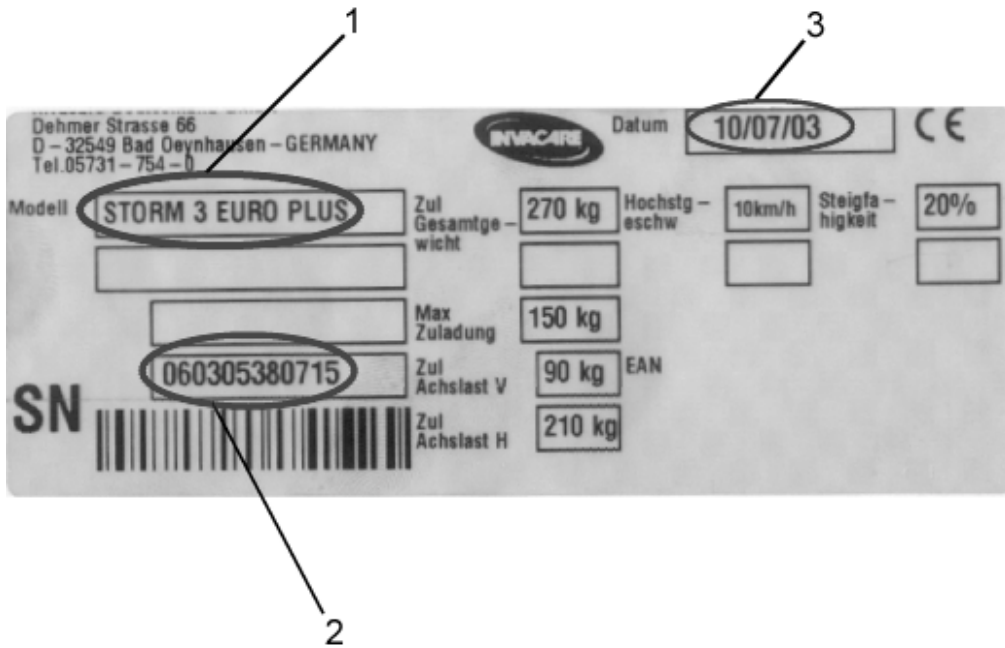
NOTE: Side dependent parts are declared as RH for right side and LH for left side.
"Left side" and "Right side" are in relation to direction of driving !

INVACARE Ltd
South Road Bridgend Industrial Estate
County Borough of Bridgend CF31 3PY
United Kingdom
Tel.: 1656 664 321
Fax.: 1656 667 532

Release
7 / 2004

Customer :
 Customer No. :
 Phone :

Contact :
 Commission :
Serial No. :



Item	Qty	Part-No.	Part-Designation
-	-		TYPE PLATE
1	-		MODEL DESIGNATION
2	-		SERIAL NUMBER
3	-		PRODUCTION DATE
<p>You are often only able to find the suitable spare part... the details on the type plate. The type plate is to be ... in a conspicuous position on the chassis.</p> <p>Please quote the serial number, model designation and production date for every order. This helps to prevent misunderstandings.</p>			

Storm 3

